

U
n
c
e
r
s
i
t
y
o
f
E
d
u
c
a
t
i
o
n



C/S based SCORM LCMS

AltEd LCMS 1.2



Contact:

AltEd (Alternate Education Inc.)

Alpha J. Lee

URL: www.alted.com

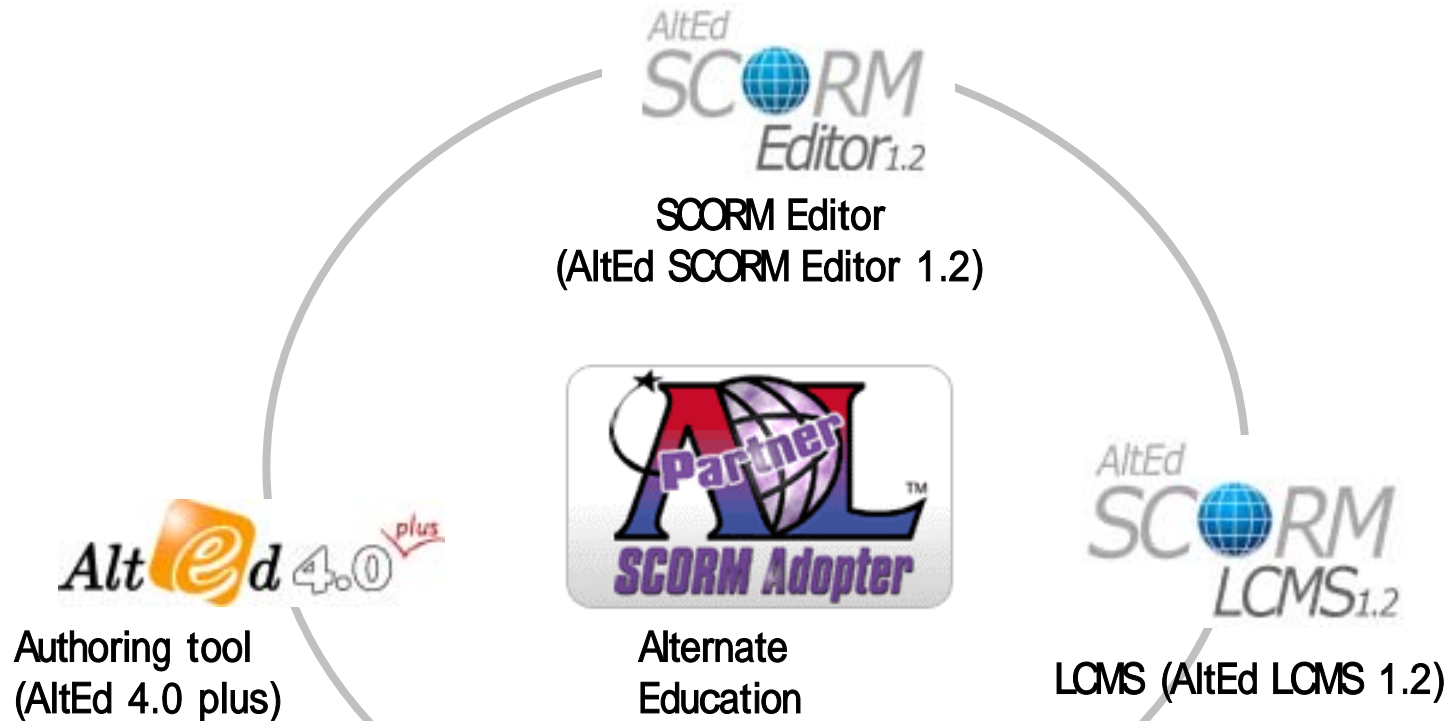
alpha@alted.com



1. Why AltEd LCMS?

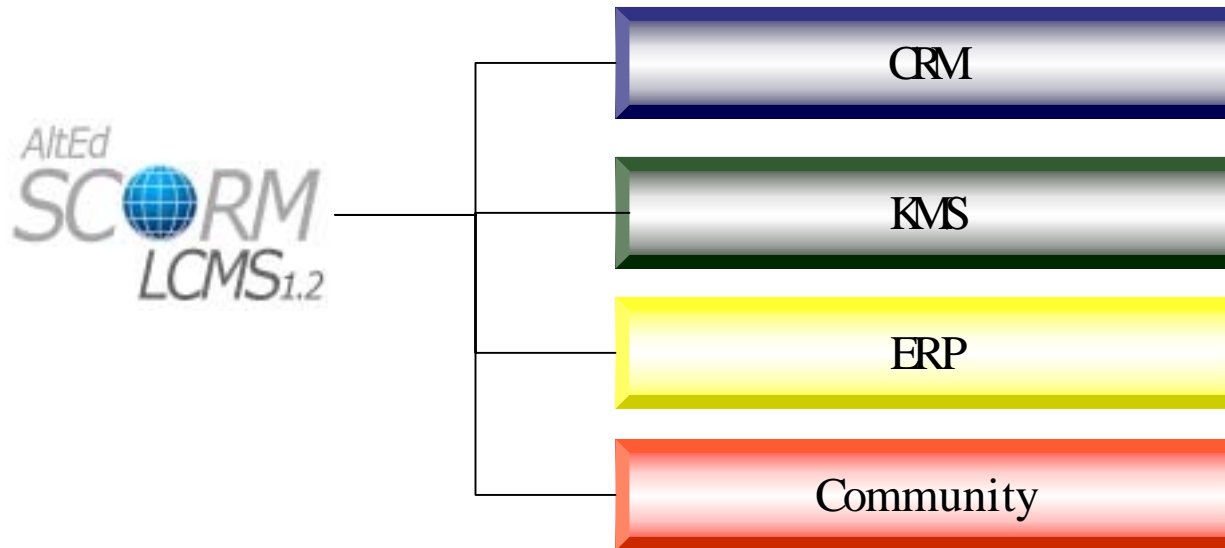
1. AltEd registered 3 products on ADL.

AltEd (Alternate Education) already registered 3 products on [www.adlnet.org\(altrc.gov\)](http://www.adlnet.org(altrc.gov))



2. Easy extensible LCMS

AltEd LCMS can be used together with other legacy system such as CRM, KMS.

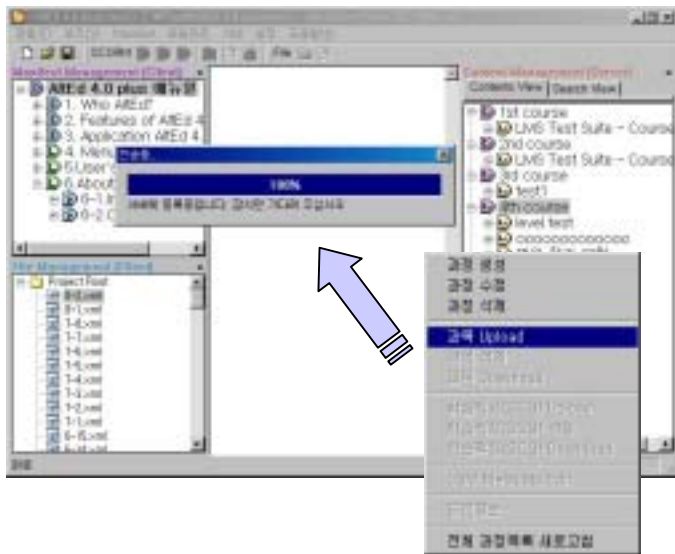


Implementation on the basis of XML data exchange



2. About AltEd LCMS

1. Main features about AltEd LCMS

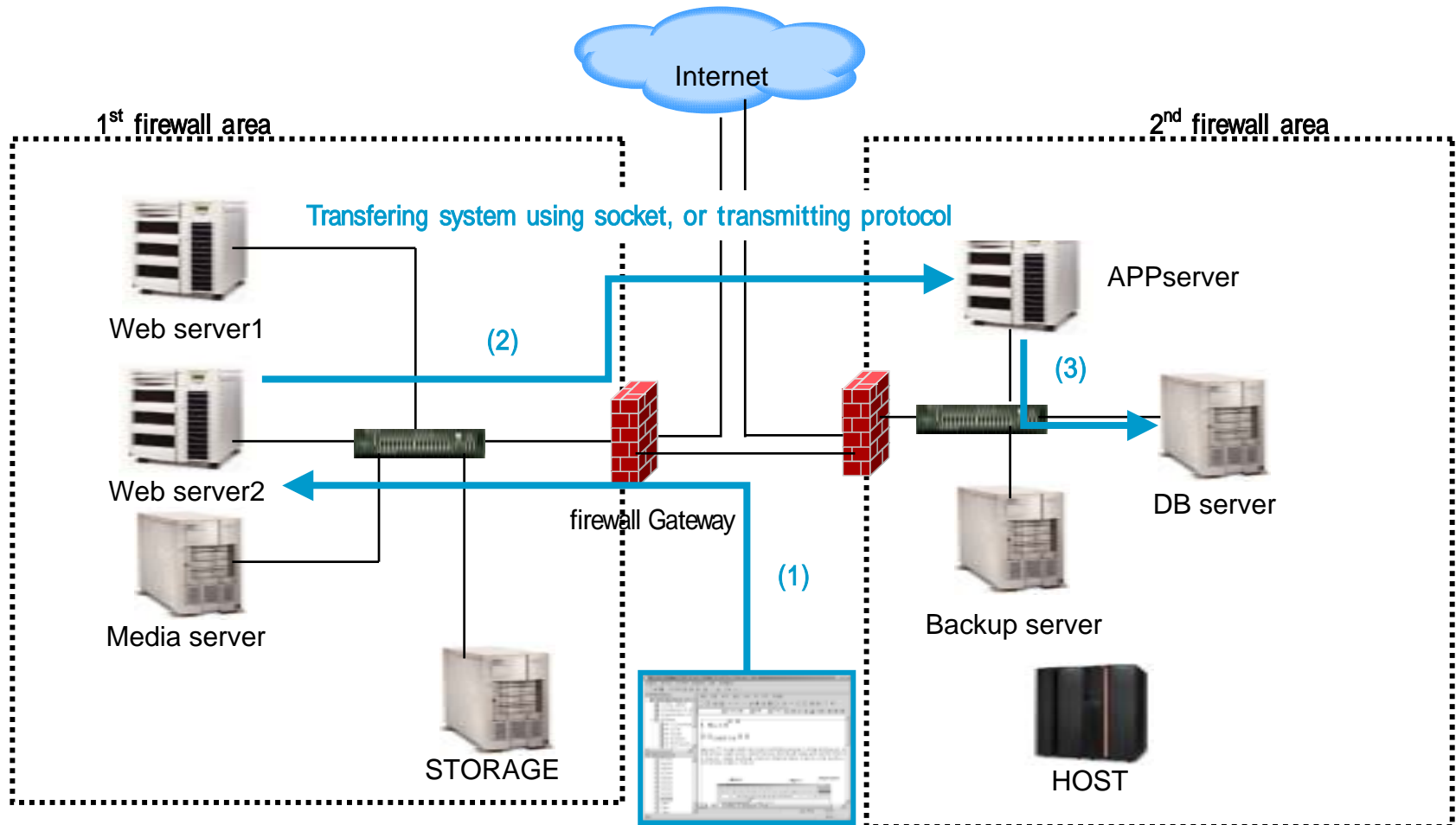


1. Basically, it works with AltEd SCORM Editor 1.2.
2. Best fitted for making SCORM-based content.
3. Powerful converting module(importing normal HTML file including connected resources- jpg, gif, swf, js, etc.- and reconstructing the image folder)
4. The best UI(User Interface) of remote controller type. (as well as Javascript type)
5. Supporting flexible communication between LCMS and AltEd SCORM Editor using various modules such as socket, Java.
6. Powerful support for the fire-walled infrastructure.(for government, research center, banking systems, etc.)
7. The best fitted for making IMSmanifest, meta-data file in short time.
8. Easy -making for SCO, Assets.
9. Able to modify the schema files (xsd files)
10. Economic manpower suggestion.(making and maintenance with one person)
11. Export to LCMS.
12. Managing the xml files and resource files in LCMS(Learning Content Management System)-create, modify, and delete. (In case of LCMS package)
13. Better upgrade for the upper SCORM version

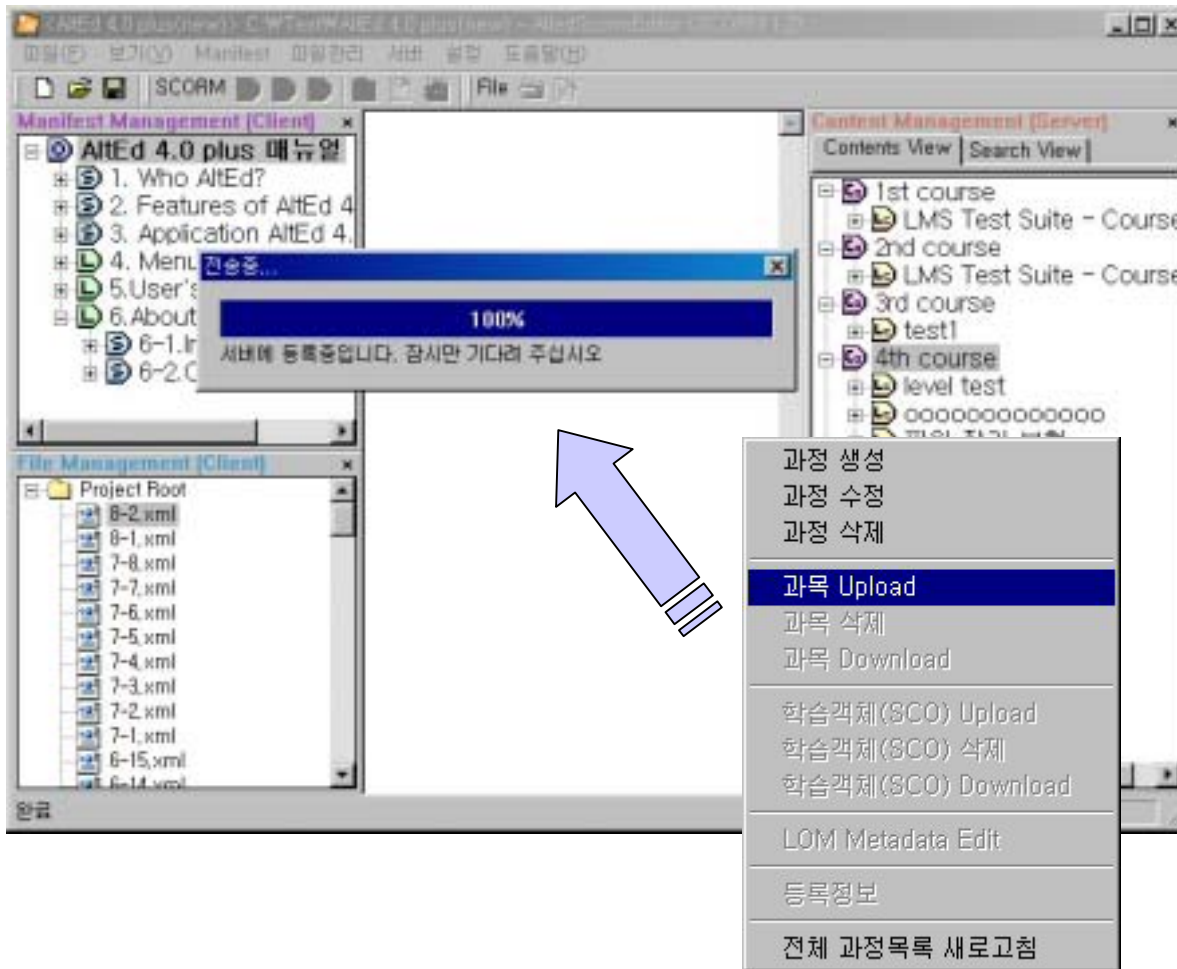
A lot of experiences; LG, KDI, Korean Army, universities

2. Appropriate with 3-tier Network structure

- Appropriate system for 3-tier network structure

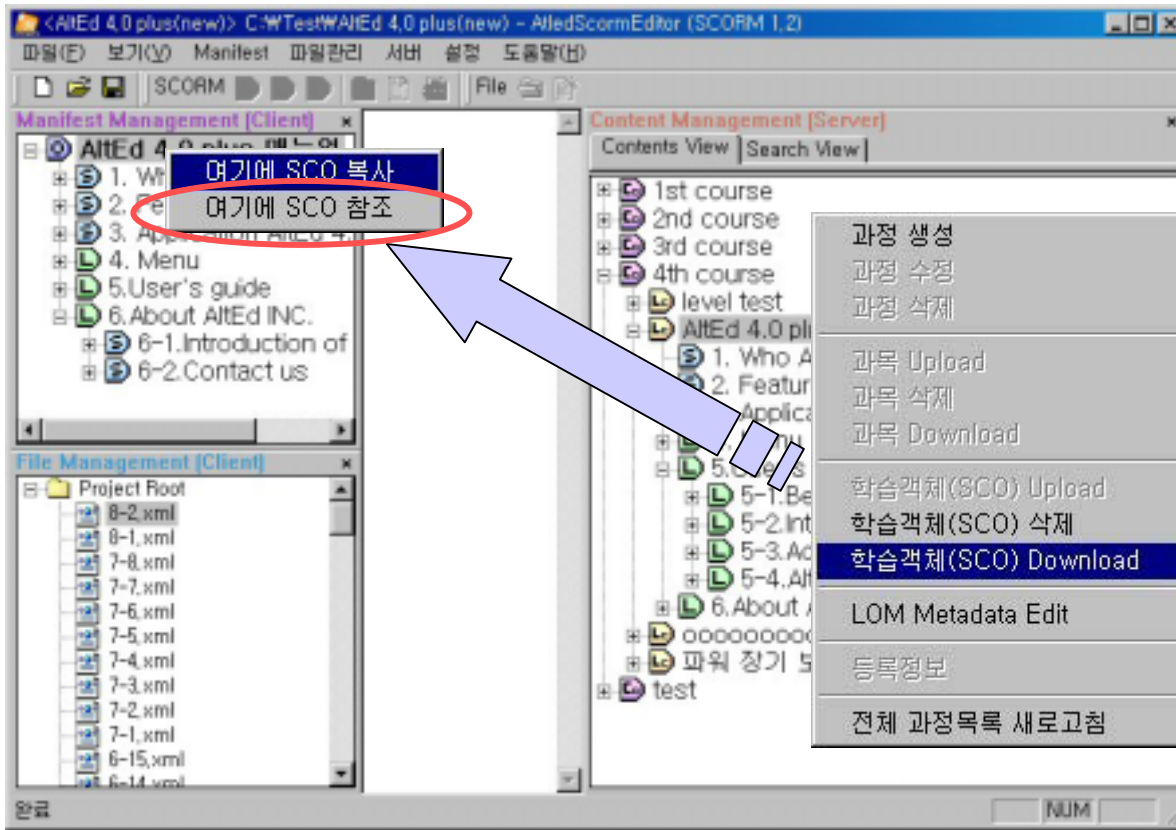


3. One-stop system



From making IMSmanifest.xml, generating metadata, importing resources, packaging, uploading, registering to the LCMS server, SCO downloading, SCO referring, SCO uploading, SCO replacing, and to project downloading, all the systems operates with one-stop system.

4. Re-use of SCO



By SCO downloading and uploading, every SCO can be reused. And these functions is done by drag & drop.

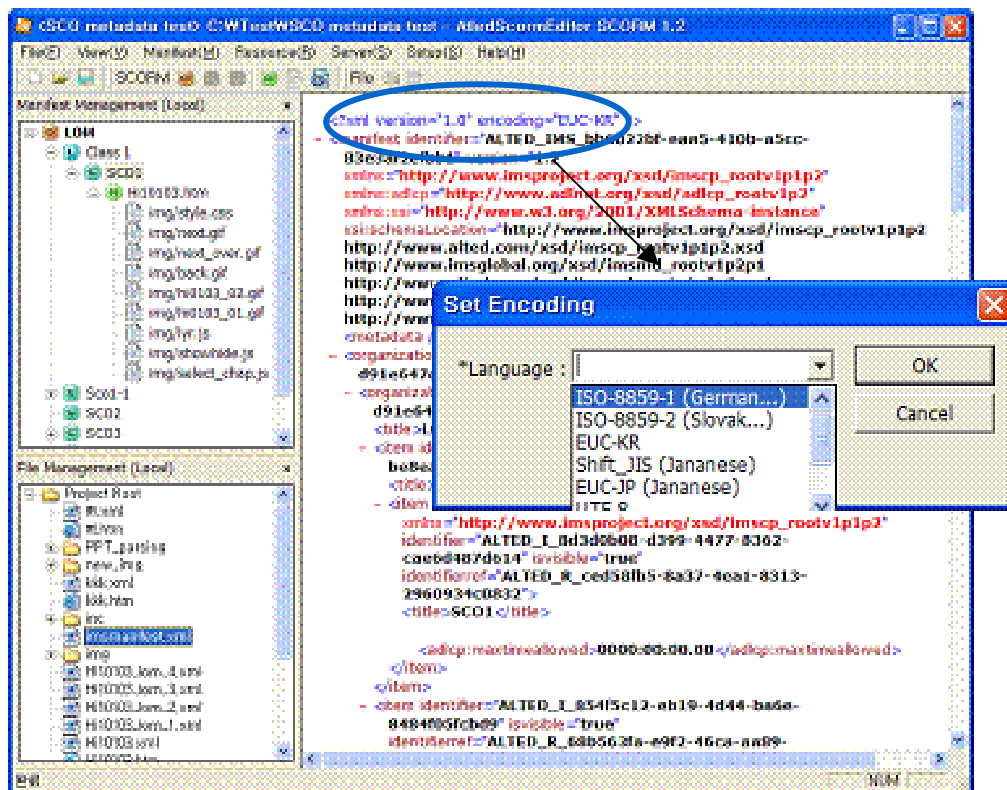
SCO download

SCO download is implemented with copy and refer SCO. Copy SCO is to copy the information, as well as resource files. But refer SCO is only to get the information of SCO

SCO upload

SCO upload is implemented with upload and replace of SCO. SCO upload is to add the SCO to the existed SCOs of LCMS server. But replace SCO is to replace a SCO with locally assigned SCO.

5. Multi-byte support



AltEd LCMS supports not only one-byte, but also two-byte content.

Using multi-language support of AltEd SCORM Editor 1.2 AltEd LCMS can display both types.

6. Applying KMS using metadata on the basis of LCMS

AltEd

HOME CONTACT FAQ SITEMAP

Mission & Service HOME 강좌리스트 수강신청 현황 교육과정안내 도움말

과정신청
문의하기
문의통계
맞보기 강좌
보험

78 일반보험 보험에 필요한 서류는 무엇인가요?
79 일반보험 보험료 산출기준 알아보기
80 일반보험 보험료 산출기준 알아보기
81 직업훈련 보험 안내하기
82 일반보험 직업훈련 보험 안내하기
83 일반보험 보험료 산출기준 알아보기
84 일반보험 보험료 산출기준 알아보기

보험

Result of searching

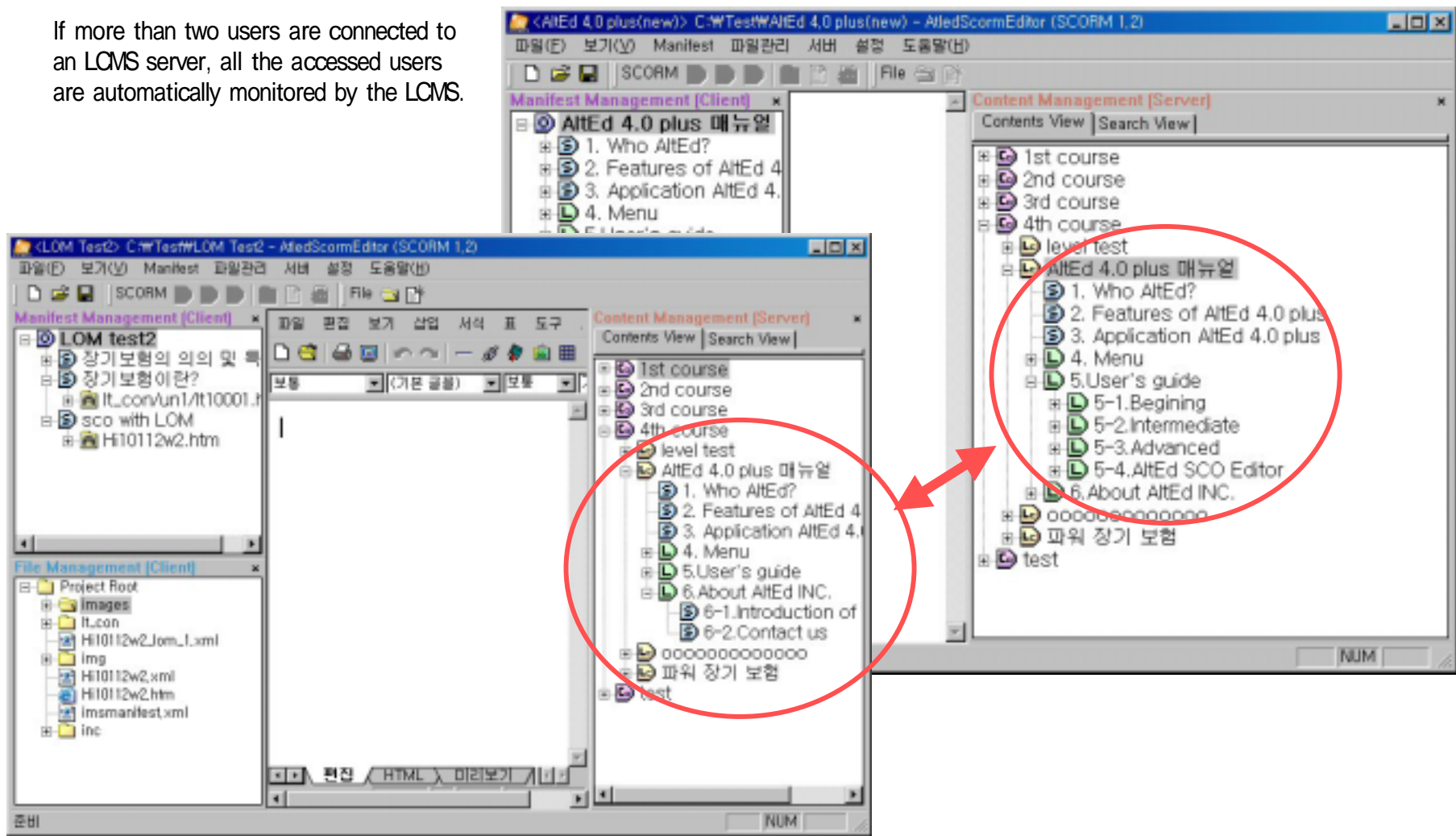
If you want to move the specific page in a SCO, for instance, 9th page of 10-page SCO, it is easy for you to move to the 9th page directly.

Using metadata makes you easy to utilize e-learning content as a knowledge on KMS.

E-Learning content is very useful for KMS because, it is concept, well -arranged, and good -designed.

7. Real-time monitoring for other user

If more than two users are connected to an LCMS server, all the accessed users are automatically monitored by the LCMS.



8. Various UI(User Interface) for the student.



General type



Frame type



Javascript tree type



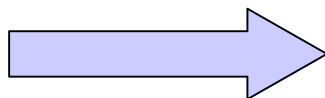
Remote controller type

9. System architecture

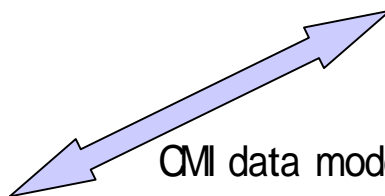


AltEd SCORM editor 1.2
(Content aggregation)

SCO, asset, metadata



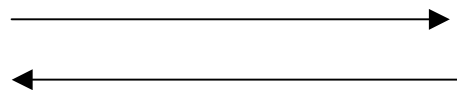
AltEd LCMS Server



CMI data model



API adapter





Thank you

Contact:

AltEd (Alternate Education Inc.)

Alpha J. Lee

URL: www.alted.com

alpha@alted.com